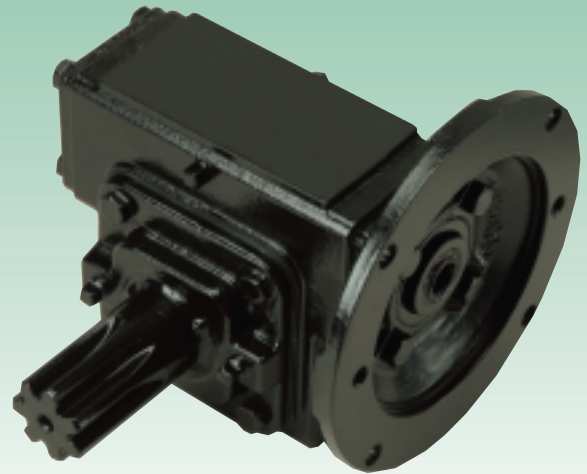


# Modified Worm Gear Speed Reducers



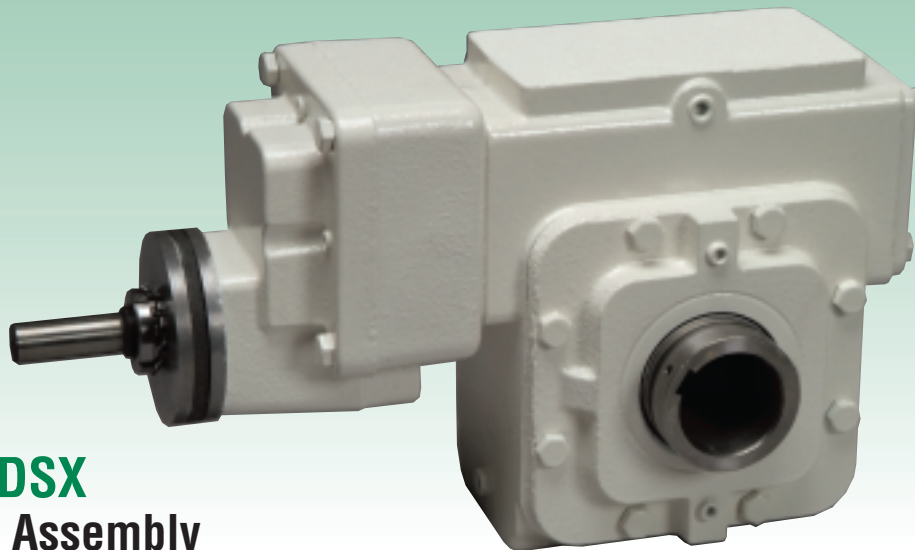
## E24 MDSS DR Assembly 56C

- Quill Input Adaptor
- Hollow Output Shaft with a Single QD® Bushing (Split Tapered Bushing)
- Single Reduction



## E17 MDNS L Assembly 56C

- Quill Input Adaptor
- Solid Output Shaft with Integral Pinion or External Spline
- Single Reduction



## E30 XDSX D-DLR Assembly

- Variable Resistance Solid Input Shaft
- Hollow Output Shaft
- Helical/Worm Double Reduction
- White Epoxy Coating

QD® is a registered trademark of Emerson Power Transmission Manufacturing, L.P.



# SE Encore Modified Worm Gear Speed Reducers

## MODIFIED CONFIGURATION PROCEDURE

### SIZE

Identify the three digit nomenclature for size appearing in the selection pages of this catalog section.

**Example:** 1HP input, 30:1 gear reduction, 1750 RPM 1.25 service factor yields a 2.375" center distance speed reducer. The nomenclature for the size of this unit is "E24."

### MODEL

There are a wide variety of models available in the Modified product offering. Each is identified at the top of the corresponding dimension page in this section by a complete description and by the four letter (e.g. MDNS) model nomenclature.

MODEL	DESCRIPTION
GSYD	Drywell coupled input adaptor; hollow output shaft, double reduction
CSFD	Coupled input adaptor; flange mount, hollow output shaft, double reduction

### RATIO

Identify the required ratio in full format (i.e. 30:1), or in brief format (i.e. 30). A list of available standard and special ratios appears on page 133.

### ASSEMBLY

The assembly of a Modified product is described by the relative positions of the input and output shaft. Refer to the dimension pages in this catalog section for the assembly possibilities associated with each speed reducer model.

**Example:** The nomenclature for a size E20 reducer of model XDNS and assembled with two standard output shaft extensions is stated as "E20 XDNS LR."

**Example:** The nomenclature of a size E43 reducer of model CDSS with output flange to the right of the input is stated as "E43 CDSS DLR."

### INPUT ADAPTOR

Identify the input adaptor for the motor flange being mounted to the Modified product. The dimension pages in this section contain the possible input adaptor selections for each speed reducer size. If an input bushing is desired, specify the desired adaptor size assembled with bushing. These bushings will be factory installed prior to shipment.

**Example:** The nomenclature for a NEMA 56C adaptor flange is "56C."

### HOLLOW OUTPUT SHAFT BORE SIZE

Identify the hollow output shaft bore size of an MDSS using the tables on page xx. Express the bore size as a decimal (Example = 1.438"). Specify a standard bore unit, the desired hollow output bore size, and the output shaft bushing kit part number if an output bore bushing kit is required.

**Example:** To include an output bushing kit on an E20 CDSS that creates a 0.750" output bore, chose kit number WKE850638 or specify, "Bush output to 0.750" bore."

### ACCESSORIES

Identify the required Modified product accessory either by "kit" part number or by description. All accessories in this section of the catalog, except output bushing kits, are factory mounted prior to shipment.

**Example:** To include an output bushing kit on an E20 CDNS that creates a 0.750" output bore, chose kit number WKE850638 or specify, "Bush output to 0.750" bore."

### SPECIAL MOUNTINGS AND LUBRICANT LEVEL

Identify the proper lubricant level for the desired mounting position from the table on pages 108-109. The choices are *Standard*, *Inverted*, *Input shaft horizontal*, or *Input shaft vertical*.

## MODIFIED PRODUCT NOMENCLATURE EXAMPLES

SIZE	MODEL	RATIO	ASSEMBLY	INPUT ADAPTOR	HOLLOW OUTPUT SHAFT BORE SIZE	ACCESSORY And MOUNTING	COMPLETE NOMENCLATURE
E17	CSFS	50	L	56C	1.000"	Coupling L 075 100046	E17 CSFS 50 L 56C with Coupling L 075
E24	MDS D	60	DLR	56C	1.000"	WKE850653	E24 MDS D 60 DLR 56C 1.000" Output Bushing for 1.500" Output Bore
E26	XDVD	500	LU-RD	140TC			E26 XDVD 500 LURD 140TC
E30	MDSS	5	DLR	180TC	1.938"	Inverted Mount	E30 MDSS 5 DLR 180TC 1.938 Inverted Mount
E26	CDSS	12.5	DLR	56C	1.438"	YKIT9810176	E26 CDSS 12.5:1 56C 1.438" with Hydraulic Motor Adaptor Ring for SAE-B



2D DRAWINGS & 3D MODELS  
www.WINSMITH.com

