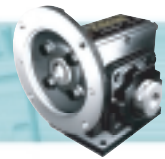


# DOUBLE REDUCTION

With Mobil Glygoyle 460 Lubricant



| CENTER DISTANCE<br>DOUBLE WORM<br>HELICAL WORM                  |                               | PRIMARY<br>1.333<br>N/A         | SECONDARY<br>2.000<br>N/A | HORSEPOWER AND TORQUE RATINGS |                     |                               |                     |             |                               |             |  | OVERHUNG LOAD CAPACITIES (lb)               |                              |                               | THRUST LOAD CAPACITIES (lb)    |                               |  |
|---|-------------------------------|---------------------------------|---------------------------|-------------------------------|---------------------|-------------------------------|---------------------|-------------|-------------------------------|-------------|--|---|------------------------------|-------------------------------|--------------------------------|-------------------------------|--|
| OVERALL<br>RATIO <sup>1</sup>                                   | PRIMARY<br>RATIO <sup>1</sup> | SECONDARY<br>RATIO <sup>1</sup> | INPUT<br>RPM <sup>2</sup> | OUTPUT<br>RPM                 | MECHANICAL          |                               |                     |             |                               |             |  |   | ALL<br>SHAFT INPUT<br>MODELS | OUTPUT SHAFT <sup>5,6</sup>   |                                | OUTPUT SHAFT <sup>6</sup>     |  |
|   |                               |                                 |                           |                               | 1.00 SERVICE FACTOR |                               | 1.25 SERVICE FACTOR |             | 1.50 SERVICE FACTOR           |             | SOLID <sup>3</sup><br>SHAFT<br>(e.g. MDND) | HOLLOW <sup>4</sup><br>SHAFT<br>(e.g. MDSD) |                              | SOLID<br>SHAFT<br>(e.g. MDND) | HOLLOW<br>SHAFT<br>(e.g. MDSD) |                               |  |
|   |                               |                                 |                           |                               | INPUT<br>HP         | OUTPUT<br>TORQUE<br>(lbf-in.) | EFF                 | INPUT<br>HP | OUTPUT<br>TORQUE<br>(lbf-in.) | INPUT<br>HP |  |   |                              |                               |                                | OUTPUT<br>TORQUE<br>(lbf-in.) |  |
| SOLID OUTPUT<br><b>50(D)</b><br>HOLLOW OUTPUT<br><b>53.3(D)</b> | 10                            | 5                               | 2500                      | 50.0                          | 0.955               | 1056                          | 88                  | 0.764       | 845                           | 0.637       | 704  | 125   | 572                          | 1265                          | 615                            | 1440                          |  |
|   |                               |                                 | 1750                      | 35.0                          | 0.727               | 1166                          | 89                  | 0.582       | 933                           | 0.485       | 777  |   |                              |                               |                                |                               |  |
|   |                               |                                 | 1160                      | 23.2                          | 0.494               | 1192                          | 89                  | 0.395       | 954                           | 0.329       | 795  |   |                              |                               |                                |                               |  |
|   | 10                            | 5                               | 870                       | 17.4                          | 0.374               | 1206                          | 89                  | 0.299       | 965                           | 0.249       | 804  |   |                              |                               |                                |                               |  |
|   |                               |                                 | 600                       | 12.0                          | 0.262               | 1218                          | 89                  | 0.210       | 974                           | 0.175       | 812  |   |                              |                               |                                |                               |  |
|   |                               |                                 | 300                       | 6.0                           | 0.134               | 1232                          | 87                  | 0.107       | 986                           | 0.089       | 821  |   |                              |                               |                                |                               |  |
| 100   | 2.0                           | 0.046                           | 1241                      | 86                            | 0.037               | 993                           | 0.031               | 827         |                               |             |  |   |                              |                               |                                |                               |  |
| 75(D)   | 5                             | 15                              | 2500                      | 33.3                          | 0.513               | 815                           | 84                  | 0.410       | 652                           | 0.342       | 543  | 136   | 650                          | 1345                          | 894                            | 1440                          |  |
|   |                               |                                 | 1750                      | 23.3                          | 0.364               | 845                           | 86                  | 0.291       | 676                           | 0.243       | 563  |   |                              |                               |                                |                               |  |
|   |                               |                                 | 1160                      | 15.5                          | 0.245               | 869                           | 87                  | 0.196       | 695                           | 0.163       | 579  |   |                              |                               |                                |                               |  |
|   |                               |                                 | 870                       | 11.6                          | 0.187               | 881                           | 87                  | 0.150       | 705                           | 0.125       | 587  |   |                              |                               |                                |                               |  |
|   |                               |                                 | 600                       | 8.0                           | 0.133               | 892                           | 85                  | 0.106       | 714                           | 0.089       | 595  |   |                              |                               |                                |                               |  |
|   |                               |                                 | 300                       | 4.0                           | 0.069               | 905                           | 84                  | 0.055       | 724                           | 0.046       | 603  |   |                              |                               |                                |                               |  |
| 100   | 1.3                           | 0.023                           | 914                       | 83                            | 0.018               | 731                           | 0.015               | 609         |                               |             |  |   |                              |                               |                                |                               |  |
| 100(D)  | 5                             | 20                              | 2500                      | 25.0                          | 0.418               | 872                           | 83                  | 0.334       | 698                           | 0.279       | 581  | 136   | 650                          | 1345                          | 894                            | 1440                          |  |
|   |                               |                                 | 1750                      | 17.5                          | 0.304               | 930                           | 85                  | 0.243       | 744                           | 0.203       | 620  |   |                              |                               |                                |                               |  |
|   |                               |                                 | 1160                      | 11.6                          | 0.189               | 876                           | 86                  | 0.151       | 701                           | 0.126       | 584  |   |                              |                               |                                |                               |  |
|   |                               |                                 | 870                       | 8.7                           | 0.146               | 900                           | 85                  | 0.117       | 720                           | 0.097       | 600  |   |                              |                               |                                |                               |  |
|   |                               |                                 | 600                       | 6.0                           | 0.105               | 923                           | 84                  | 0.084       | 738                           | 0.070       | 615  |   |                              |                               |                                |                               |  |
|   |                               |                                 | 300                       | 3.0                           | 0.052               | 895                           | 82                  | 0.042       | 716                           | 0.035       | 597  |   |                              |                               |                                |                               |  |
| 100   | 1.0                           | 0.018                           | 903                       | 81                            | 0.014               | 722                           | 0.012               | 602         |                               |             |  |   |                              |                               |                                |                               |  |
| 150(D)  | 10                            | 15                              | 2500                      | 16.7                          | 0.284               | 865                           | 81                  | 0.227       | 692                           | 0.189       | 577  | 125   | 650                          | 1345                          | 894                            | 1440                          |  |
|   |                               |                                 | 1750                      | 11.7                          | 0.199               | 881                           | 82                  | 0.159       | 705                           | 0.133       | 587  |   |                              |                               |                                |                               |  |
|   |                               |                                 | 1160                      | 7.7                           | 0.135               | 893                           | 81                  | 0.108       | 714                           | 0.090       | 595  |   |                              |                               |                                |                               |  |
|   |                               |                                 | 870                       | 5.8                           | 0.102               | 899                           | 81                  | 0.082       | 719                           | 0.068       | 599  |   |                              |                               |                                |                               |  |
|   |                               |                                 | 600                       | 4.0                           | 0.071               | 905                           | 81                  | 0.057       | 724                           | 0.047       | 603  |   |                              |                               |                                |                               |  |
|   |                               |                                 | 300                       | 2.0                           | 0.035               | 911                           | 82                  | 0.028       | 729                           | 0.023       | 607  |   |                              |                               |                                |                               |  |
| 100   | 0.7                           | 0.012                           | 916                       | 80                            | 0.010               | 733                           | 0.008               | 611         |                               |             |  |   |                              |                               |                                |                               |  |

1. Exact ratio.  
 2. If input speed is below 1160 RPM, please specify speed and mounting position to ensure proper lubrication.  
 3. Overhung load given at a distance equal to one shaft diameter from the face of the output seal.  
 4. Overhung load is based on maximum bore size. Use of smaller driven shaft diameter may limit OHL capacity.

5. Overhung loads are based on the output shaft and output bearing capacities only. Check Overhung Load Section for other considerations.  
 6. Overhung load and thrust load ratings are computed independent of each other. For combined load applications, contact Winsmith.

Ratings





# DOUBLE REDUCTION

With Mobil Glygoyle 460 Lubricant

REDUCER SIZE

# E20

| CENTER DISTANCE<br>DOUBLE WORM<br>HELICAL WORM |                               | PRIMARY<br>1.333<br>N/A         | SECONDARY<br>2.000<br>N/A | HORSEPOWER AND TORQUE RATINGS |                     |                               |                     |             |                               |             |  | OVERHUNG LOAD CAPACITIES (lb)               |                              |                               | THRUST LOAD CAPACITIES (lb)    |                               |  |
|--|-------------------------------|---------------------------------|---------------------------|-------------------------------|---------------------|-------------------------------|---------------------|-------------|-------------------------------|-------------|--|---|------------------------------|-------------------------------|--------------------------------|-------------------------------|--|
| OVERALL<br>RATIO <sup>1</sup>                  | PRIMARY<br>RATIO <sup>1</sup> | SECONDARY<br>RATIO <sup>1</sup> | INPUT<br>RPM <sup>2</sup> | OUTPUT<br>RPM                 | MECHANICAL          |                               |                     |             |                               |             |  |   | ALL<br>SHAFT INPUT<br>MODELS | OUTPUT SHAFT <sup>5,6</sup>   |                                | OUTPUT SHAFT <sup>6</sup>     |  |
|  |                               |                                 |                           |                               | 1.00 SERVICE FACTOR |                               | 1.25 SERVICE FACTOR |             | 1.50 SERVICE FACTOR           |             | SOLID <sup>3</sup><br>SHAFT<br>(e.g. MDND) | HOLLOW <sup>4</sup><br>SHAFT<br>(e.g. MDSD) |                              | SOLID<br>SHAFT<br>(e.g. MDND) | HOLLOW<br>SHAFT<br>(e.g. MDSD) |                               |  |
|  |                               |                                 |                           |                               | INPUT<br>HP         | OUTPUT<br>TORQUE<br>(lbf-in.) | EFF                 | INPUT<br>HP | OUTPUT<br>TORQUE<br>(lbf-in.) | INPUT<br>HP |  |   |                              |                               |                                | OUTPUT<br>TORQUE<br>(lbf-in.) |  |
| 200(D)   | 10                            | 20                              | 2500                      | 12.5                          | 0.218               | 869                           | 79                  | 0.174       | 695                           | 0.145       | 579  | 125   | 650                          | 1345                          | 894                            | 1440                          |  |
|  |                               |                                 | 1750                      | 8.8                           | 0.155               | 900                           | 80                  | 0.124       | 720                           | 0.103       | 600  |   |                              |                               |                                |                               |  |
|  |                               |                                 | 1160                      | 5.8                           | 0.107               | 925                           | 80                  | 0.086       | 740                           | 0.071       | 617  |   |                              |                               |                                |                               |  |
|  |                               |                                 | 870                       | 4.4                           | 0.077               | 890                           | 80                  | 0.062       | 712                           | 0.051       | 593  |   |                              |                               |                                |                               |  |
|  |                               |                                 | 600                       | 3.0                           | 0.054               | 895                           | 79                  | 0.043       | 716                           | 0.036       | 597  |   |                              |                               |                                |                               |  |
|  |                               |                                 | 300                       | 1.5                           | 0.027               | 901                           | 81                  | 0.022       | 721                           | 0.018       | 601  |   |                              |                               |                                |                               |  |
|  |                               |                                 | 100                       | 0.5                           | 0.009               | 905                           | 79                  | 0.007       | 724                           | 0.006       | 603  |   |                              |                               |                                |                               |  |
| 300(D)   | 20                            | 15                              | 2500                      | 8.3                           | 0.168               | 891                           | 70                  | 0.134       | 713                           | 0.112       | 594  | 100   | 650                          | 1345                          | 894                            | 1440                          |  |
|  |                               |                                 | 1750                      | 5.8                           | 0.116               | 899                           | 72                  | 0.093       | 719                           | 0.077       | 599  |   |                              |                               |                                |                               |  |
|  |                               |                                 | 1160                      | 3.9                           | 0.076               | 905                           | 73                  | 0.061       | 724                           | 0.051       | 603  |   |                              |                               |                                |                               |  |
|  |                               |                                 | 870                       | 2.9                           | 0.056               | 908                           | 74                  | 0.045       | 726                           | 0.037       | 605  |   |                              |                               |                                |                               |  |
|  |                               |                                 | 600                       | 2.0                           | 0.038               | 911                           | 75                  | 0.030       | 729                           | 0.025       | 607  |   |                              |                               |                                |                               |  |
|  |                               |                                 | 300                       | 1.0                           | 0.019               | 915                           | 77                  | 0.015       | 732                           | 0.013       | 610  |   |                              |                               |                                |                               |  |
|  |                               |                                 | 100                       | 0.3                           | 0.006               | 917                           | 76                  | 0.005       | 734                           | 0.004       | 611  |   |                              |                               |                                |                               |  |
| 500(D)   | 25                            | 20                              | 2500                      | 5.0                           | 0.108               | 887                           | 65                  | 0.086       | 710                           | 0.072       | 591  | 100   | 650                          | 1345                          | 894                            | 1440                          |  |
|  |                               |                                 | 1750                      | 3.5                           | 0.074               | 893                           | 67                  | 0.059       | 714                           | 0.049       | 595  |   |                              |                               |                                |                               |  |
|  |                               |                                 | 1160                      | 2.3                           | 0.047               | 898                           | 70                  | 0.038       | 718                           | 0.031       | 599  |   |                              |                               |                                |                               |  |
|  |                               |                                 | 870                       | 1.7                           | 0.035               | 900                           | 72                  | 0.028       | 720                           | 0.023       | 600  |   |                              |                               |                                |                               |  |
|  |                               |                                 | 600                       | 1.2                           | 0.024               | 902                           | 73                  | 0.019       | 722                           | 0.016       | 601  |   |                              |                               |                                |                               |  |
|  |                               |                                 | 300                       | 0.6                           | 0.012               | 905                           | 75                  | 0.010       | 724                           | 0.008       | 603  |   |                              |                               |                                |                               |  |
|  |                               |                                 | 100                       | 0.2                           | 0.004               | 906                           | 73                  | 0.003       | 725                           | 0.003       | 604  |   |                              |                               |                                |                               |  |
| 750(D)   | 25                            | 30                              | 2500                      | 3.3                           | 0.09                | 1080                          | 63                  | 0.072       | 864                           | 0.060       | 720  | 100   | 650                          | 1345                          | 894                            | 1440                          |  |
|  |                               |                                 | 1750                      | 2.3                           | 0.062               | 1088                          | 65                  | 0.050       | 870                           | 0.041       | 725  |   |                              |                               |                                |                               |  |
|  |                               |                                 | 1160                      | 1.6                           | 0.04                | 1094                          | 68                  | 0.032       | 875                           | 0.027       | 729  |   |                              |                               |                                |                               |  |
|  |                               |                                 | 870                       | 1.2                           | 0.029               | 1097                          | 69                  | 0.023       | 878                           | 0.019       | 731  |   |                              |                               |                                |                               |  |
|  |                               |                                 | 600                       | 0.8                           | 0.02                | 1099                          | 70                  | 0.016       | 879                           | 0.013       | 733  |   |                              |                               |                                |                               |  |
|  |                               |                                 | 300                       | 0.4                           | 0.01                | 1103                          | 72                  | 0.008       | 882                           | 0.007       | 735  |   |                              |                               |                                |                               |  |
|  |                               |                                 | 100                       | 0.1                           | 0.003               | 1105                          | 71                  | 0.002       | 884                           | 0.002       | 737  |   |                              |                               |                                |                               |  |

1. Exact ratio.  
 2. If input speed is below 1160 RPM, please specify speed and mounting position to ensure proper lubrication.  
 3. Overhung load given at a distance equal to one shaft diameter from the face of the output seal.  
 4. Overhung load is based on maximum bore size. Use of smaller driven shaft diameter may limit OHL capacity.

5. Overhung loads are based on the output shaft and output bearing capacities only. Check Overhung Load Section for other considerations.  
 6. Overhung load and thrust load ratings are computed independent of each other. For combined load applications, contact Winsmith.

Ratings

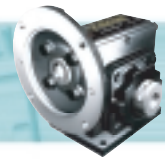


2D DRAWINGS & 3D MODELS  
[www.WINSMITH.com](http://www.WINSMITH.com)



# DOUBLE REDUCTION

With Mobil Glygoyle 460 Lubricant



| CENTER DISTANCE<br>DOUBLE WORM<br>HELICAL WORM |                               | PRIMARY<br>1.333<br>N/A         | SECONDARY<br>2.000<br>N/A | HORSEPOWER AND TORQUE RATINGS |                     |                               |                     |             |                               |             |  | OVERHUNG LOAD CAPACITIES (lb)               |                              |                               | THRUST LOAD CAPACITIES (lb)    |                               |  |
|--|-------------------------------|---------------------------------|---------------------------|-------------------------------|---------------------|-------------------------------|---------------------|-------------|-------------------------------|-------------|--|---|------------------------------|-------------------------------|--------------------------------|-------------------------------|--|
| OVERALL<br>RATIO <sup>1</sup>                  | PRIMARY<br>RATIO <sup>1</sup> | SECONDARY<br>RATIO <sup>1</sup> | INPUT<br>RPM <sup>2</sup> | OUTPUT<br>RPM                 | MECHANICAL          |                               |                     |             |                               |             |  |   | ALL<br>SHAFT INPUT<br>MODELS | OUTPUT SHAFT <sup>5,6</sup>   |                                | OUTPUT SHAFT <sup>6</sup>     |  |
|  |                               |                                 |                           |                               | 1.00 SERVICE FACTOR |                               | 1.25 SERVICE FACTOR |             | 1.50 SERVICE FACTOR           |             | SOLID <sup>3</sup><br>SHAFT<br>(e.g. MDND) | HOLLOW <sup>4</sup><br>SHAFT<br>(e.g. MDSD) |                              | SOLID<br>SHAFT<br>(e.g. MDND) | HOLLOW<br>SHAFT<br>(e.g. MDSD) |                               |  |
|  |                               |                                 |                           |                               | INPUT<br>HP         | OUTPUT<br>TORQUE<br>(lbf-in.) | EFF                 | INPUT<br>HP | OUTPUT<br>TORQUE<br>(lbf-in.) | INPUT<br>HP |  |   |                              |                               |                                | OUTPUT<br>TORQUE<br>(lbf-in.) |  |
| <b>1000(D)</b>                                 | 50                            | 20                              | 2500                      | 2.5                           | 0.073               | 897                           | 49                  | 0.058       | 718                           | 0.049       | 598  | 100   | 650                          | 1345                          | 894                            | 1440                          |  |
|  |                               |                                 | 1750                      | 1.8                           | 0.047               | 900                           | 54                  | 0.038       | 720                           | 0.031       | 600  |   |                              |                               |                                |                               |  |
|  |                               |                                 | 1160                      | 1.2                           | 0.029               | 903                           | 58                  | 0.023       | 722                           | 0.019       | 602  |   |                              |                               |                                |                               |  |
|  |                               |                                 | 870                       | 0.9                           | 0.021               | 904                           | 60                  | 0.017       | 723                           | 0.014       | 603  |   |                              |                               |                                |                               |  |
|  |                               |                                 | 600                       | 0.6                           | 0.014               | 905                           | 63                  | 0.011       | 724                           | 0.009       | 603  |   |                              |                               |                                |                               |  |
|  |                               |                                 | 300                       | 0.3                           | 0.007               | 906                           | 65                  | 0.006       | 725                           | 0.005       | 604  |   |                              |                               |                                |                               |  |
|  |                               |                                 | 100                       | 0.1                           | 0.002               | 907                           | 65                  | 0.002       | 726                           | 0.001       | 605  |   |                              |                               |                                |                               |  |
| <b>1500(D)</b>                                 | 50                            | 30                              | 2500                      | 1.7                           | 0.053               | 1093                          | 54                  | 0.042       | 874                           | 0.035       | 729  | 100   | 650                          | 1345                          | 894                            | 1440                          |  |
|  |                               |                                 | 1750                      | 1.2                           | 0.037               | 1097                          | 55                  | 0.030       | 878                           | 0.025       | 731  |   |                              |                               |                                |                               |  |
|  |                               |                                 | 1160                      | 0.8                           | 0.024               | 1100                          | 56                  | 0.019       | 880                           | 0.016       | 733  |   |                              |                               |                                |                               |  |
|  |                               |                                 | 870                       | 0.6                           | 0.018               | 1101                          | 57                  | 0.014       | 881                           | 0.012       | 734  |   |                              |                               |                                |                               |  |
|  |                               |                                 | 600                       | 0.4                           | 0.012               | 1103                          | 56                  | 0.010       | 882                           | 0.008       | 735  |   |                              |                               |                                |                               |  |
|  |                               |                                 | 300                       | 0.2                           | 0.006               | 1104                          | 58                  | 0.005       | 883                           | 0.004       | 736  |   |                              |                               |                                |                               |  |
|  |                               |                                 | 100                       | -                             | 0.002               | 1105                          | 57                  | 0.002       | 884                           | 0.001       | 737  |   |                              |                               |                                |                               |  |
| <b>2000(D)</b>                                 | 50                            | 40                              | 2500                      | 1.3                           | 0.044               | 1004                          | 46                  | 0.035       | 803                           | 0.029       | 669  | 100   | 650                          | 1345                          | 894                            | 1440                          |  |
|  |                               |                                 | 1750                      | 0.9                           | 0.028               | 1007                          | 50                  | 0.022       | 806                           | 0.019       | 671  |   |                              |                               |                                |                               |  |
|  |                               |                                 | 1160                      | 0.6                           | 0.017               | 1010                          | 54                  | 0.014       | 808                           | 0.011       | 673  |   |                              |                               |                                |                               |  |
|  |                               |                                 | 870                       | 0.4                           | 0.012               | 1011                          | 56                  | 0.010       | 809                           | 0.008       | 674  |   |                              |                               |                                |                               |  |
|  |                               |                                 | 600                       | 0.3                           | 0.008               | 1012                          | 59                  | 0.006       | 810                           | 0.005       | 675  |   |                              |                               |                                |                               |  |
|  |                               |                                 | 300                       | 0.2                           | 0.004               | 1014                          | 62                  | 0.003       | 811                           | 0.003       | 676  |   |                              |                               |                                |                               |  |
|  |                               |                                 | 100                       | -                             | 0.001               | 1015                          | 61                  | 0.001       | 812                           | 0.001       | 677  |   |                              |                               |                                |                               |  |
| <b>3000(D)</b>                                 | 60                            | 50                              | 2500                      | 0.8                           | 0.034               | 1067                          | 42                  | 0.027       | 854                           | 0.023       | 711  | 115   | 650                          | 1345                          | 894                            | 1440                          |  |
|  |                               |                                 | 1750                      | 0.6                           | 0.021               | 1070                          | 46                  | 0.017       | 856                           | 0.014       | 713  |   |                              |                               |                                |                               |  |
|  |                               |                                 | 1160                      | 0.4                           | 0.013               | 1072                          | 50                  | 0.010       | 858                           | 0.009       | 715  |   |                              |                               |                                |                               |  |
|  |                               |                                 | 870                       | 0.3                           | 0.009               | 1073                          | 53                  | 0.007       | 858                           | 0.006       | 715  |   |                              |                               |                                |                               |  |
|  |                               |                                 | 600                       | 0.2                           | 0.006               | 1074                          | 55                  | 0.005       | 859                           | 0.004       | 716  |   |                              |                               |                                |                               |  |
|  |                               |                                 | 300                       | 0.1                           | 0.003               | 1076                          | 58                  | 0.002       | 861                           | 0.002       | 717  |   |                              |                               |                                |                               |  |
|  |                               |                                 | 100                       | -                             | 0.001               | 1076                          | 57                  | 0.001       | 861                           | 0.001       | 717  |   |                              |                               |                                |                               |  |

1. Exact ratio.  
 2. If input speed is below 1160 RPM, please specify speed and mounting position to ensure proper lubrication.  
 3. Overhung load given at a distance equal to one shaft diameter from the face of the output seal.  
 4. Overhung load is based on maximum bore size. Use of smaller driven shaft diameter may limit OHL capacity.

5. Overhung loads are based on the output shaft and output bearing capacities only. Check Overhung Load Section for other considerations.  
 6. Overhung load and thrust load ratings are computed independent of each other. For combined load applications, contact Winsmith.

Ratings





# DOUBLE REDUCTION

With Mobil Glygoyle 460 Lubricant

REDUCER SIZE

# E20

| CENTER DISTANCE<br>DOUBLE WORM<br>HELICAL WORM |                               | PRIMARY<br>1.333<br>N/A         | SECONDARY<br>2.000<br>N/A | HORSEPOWER AND TORQUE RATINGS |                     |                              |     |                     |                              |             |                              | OVERHUNG LOAD CAPACITIES (lb) |                              |  | THRUST LOAD CAPACITIES (lb)                 |                               |                                |
|--|-------------------------------|---------------------------------|---------------------------|-------------------------------|---------------------|------------------------------|-----|---------------------|------------------------------|-------------|------------------------------|-------------------------------|------------------------------|--|---|-------------------------------|--------------------------------|
| OVERALL<br>RATIO <sup>1</sup>                  | PRIMARY<br>RATIO <sup>1</sup> | SECONDARY<br>RATIO <sup>1</sup> | INPUT<br>RPM <sup>2</sup> | OUTPUT<br>RPM                 | MECHANICAL          |                              |     |                     |                              |             |                              |                               | ALL<br>SHAFT INPUT<br>MODELS | OUTPUT SHAFT <sup>5,6</sup>                |   | OUTPUT SHAFT <sup>6</sup>     |                                |
|  |                               |                                 |                           |                               | 1.00 SERVICE FACTOR |                              |     | 1.25 SERVICE FACTOR |                              |             | 1.50 SERVICE FACTOR          |                               |                              | SOLID <sup>3</sup><br>SHAFT<br>(e.g. MDND) | HOLLOW <sup>4</sup><br>SHAFT<br>(e.g. MDSD) | SOLID<br>SHAFT<br>(e.g. MDND) | HOLLOW<br>SHAFT<br>(e.g. MDSD) |
|  |                               |                                 |                           |                               | INPUT<br>HP         | OUTPUT<br>TORQUE<br>(lb·in.) | EFF | INPUT<br>HP         | OUTPUT<br>TORQUE<br>(lb·in.) | INPUT<br>HP | OUTPUT<br>TORQUE<br>(lb·in.) |                               |                              |  |   |                               |                                |
| 3600(D)  | 60                            | 60                              | 2500                      | 0.7                           | 0.023               | 834                          | 40  | 0.018               | 667                          | 0.015       | 556                          | 115                           | 650                          | 1345                                       | 894   | 1440                          |                                |
|  |                               |                                 | 1750                      | 0.5                           | 0.016               | 893                          | 44  | 0.013               | 714                          | 0.011       | 595                          |                               |                              |  |   |                               |                                |
|  |                               |                                 | 1160                      | 0.3                           | 0.01                | 904                          | 49  | 0.008               | 723                          | 0.007       | 603                          |                               |                              |  |   |                               |                                |
|  |                               |                                 | 870                       | 0.2                           | 0.007               | 910                          | 51  | 0.006               | 728                          | 0.005       | 607                          |                               |                              |  |   |                               |                                |
|  |                               |                                 | 600                       | 0.2                           | 0.005               | 915                          | 53  | 0.004               | 732                          | 0.003       | 610                          |                               |                              |  |   |                               |                                |
|  |                               |                                 | 300                       | 0.1                           | 0.002               | 925                          | 56  | 0.002               | 740                          | 0.001       | 617                          |                               |                              |  |   |                               |                                |
|  |                               |                                 | 100                       | -                             | 0.001               | 926                          | 56  | 0.001               | 741                          | 0.001       | 617                          |                               |                              |  |   |                               |                                |
| 4100(D)  | 50                            | 82                              | 2500                      | 0.6                           | 0.015               | 595                          | 39  | 0.012               | 476                          | 0.010       | 397                          | 100                           | 650                          | 1345                                       | 894   | 1440                          |                                |
|  |                               |                                 | 1750                      | 0.4                           | 0.009               | 596                          | 43  | 0.007               | 477                          | 0.006       | 397                          |                               |                              |  |   |                               |                                |
|  |                               |                                 | 1160                      | 0.3                           | 0.006               | 597                          | 46  | 0.005               | 478                          | 0.004       | 398                          |                               |                              |  |   |                               |                                |
|  |                               |                                 | 870                       | 0.2                           | 0.004               | 598                          | 49  | 0.003               | 478                          | 0.003       | 399                          |                               |                              |  |   |                               |                                |
|  |                               |                                 | 600                       | 0.1                           | 0.003               | 599                          | 51  | 0.002               | 479                          | 0.002       | 399                          |                               |                              |  |   |                               |                                |
|  |                               |                                 | 300                       | 0.1                           | 0.001               | 599                          | 54  | 0.001               | 479                          | 0.001       | 399                          |                               |                              |  |   |                               |                                |
|  |                               |                                 | 100                       | -                             | 0                   | 600                          | 55  | 0.000               | 480                          | 0.000       | 400                          |                               |                              |  |   |                               |                                |
| 4920(D)  | 60                            | 82                              | 2500                      | 0.5                           | 0.013               | 595                          | 36  | 0.010               | 476                          | 0.009       | 397                          | 115                           | 650                          | 1345                                       | 894   | 1440                          |                                |
|  |                               |                                 | 1750                      | 0.4                           | 0.008               | 597                          | 40  | 0.006               | 478                          | 0.005       | 398                          |                               |                              |  |   |                               |                                |
|  |                               |                                 | 1160                      | 0.2                           | 0.005               | 598                          | 44  | 0.004               | 478                          | 0.003       | 399                          |                               |                              |  |   |                               |                                |
|  |                               |                                 | 870                       | 0.2                           | 0.004               | 598                          | 47  | 0.003               | 478                          | 0.003       | 399                          |                               |                              |  |   |                               |                                |
|  |                               |                                 | 600                       | 0.1                           | 0.002               | 599                          | 49  | 0.002               | 479                          | 0.001       | 399                          |                               |                              |  |   |                               |                                |
|  |                               |                                 | 300                       | 0.1                           | 0.001               | 599                          | 52  | 0.001               | 479                          | 0.001       | 399                          |                               |                              |  |   |                               |                                |
|  |                               |                                 | 100                       | -                             | 0                   | 600                          | 52  | 0.000               | 480                          | 0.000       | 400                          |                               |                              |  |   |                               |                                |
| 5940(D)  | 60                            | 99                              | 2500                      | 0.4                           | 0.01                | 480                          | 32  | 0.008               | 384                          | 0.007       | 320                          | 115                           | 650                          | 1345                                       | 894   | 1440                          |                                |
|  |                               |                                 | 1750                      | 0.3                           | 0.006               | 481                          | 36  | 0.005               | 385                          | 0.004       | 321                          |                               |                              |  |   |                               |                                |
|  |                               |                                 | 1160                      | 0.2                           | 0.004               | 482                          | 40  | 0.003               | 386                          | 0.003       | 321                          |                               |                              |  |   |                               |                                |
|  |                               |                                 | 870                       | 0.2                           | 0.003               | 483                          | 42  | 0.002               | 386                          | 0.002       | 322                          |                               |                              |  |   |                               |                                |
|  |                               |                                 | 600                       | 0.1                           | 0.002               | 483                          | 44  | 0.002               | 386                          | 0.001       | 322                          |                               |                              |  |   |                               |                                |
|  |                               |                                 | 300                       | 0.1                           | 0.001               | 483                          | 48  | 0.001               | 386                          | 0.001       | 322                          |                               |                              |  |   |                               |                                |
|  |                               |                                 | 100                       | -                             | 0                   | 484                          | 48  | 0.000               | 387                          | 0.000       | 323                          |                               |                              |  |   |                               |                                |

1. Exact ratio.  
 2. If input speed is below 1160 RPM, please specify speed and mounting position to ensure proper lubrication.  
 3. Overhung load given at a distance equal to one shaft diameter from the face of the output seal.  
 4. Overhung load is based on maximum bore size. Use of smaller driven shaft diameter may limit OHL capacity.

5. Overhung loads are based on the output shaft and output bearing capacities only. Check Overhung Load Section for other considerations.  
 6. Overhung load and thrust load ratings are computed independent of each other. For combined load applications, contact Winsmith.

Ratings



2D DRAWINGS & 3D MODELS  
[www.WINSMITH.com](http://www.WINSMITH.com)

