

DB/FDB

D-90[®] TYPE DE[®]



GENERAL INFORMATION

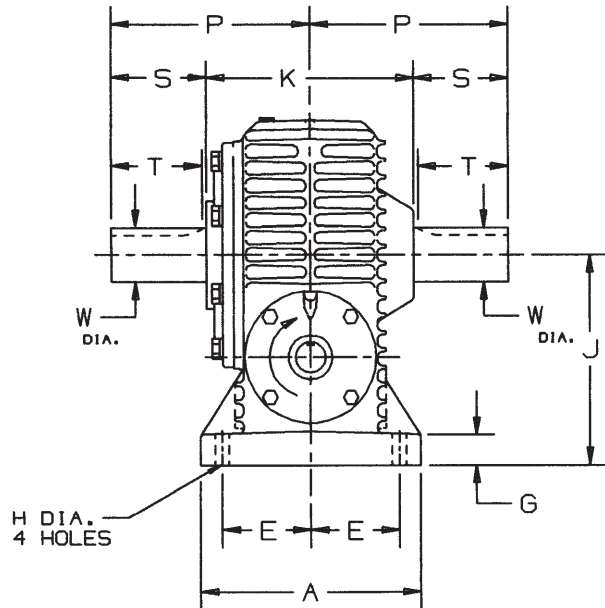
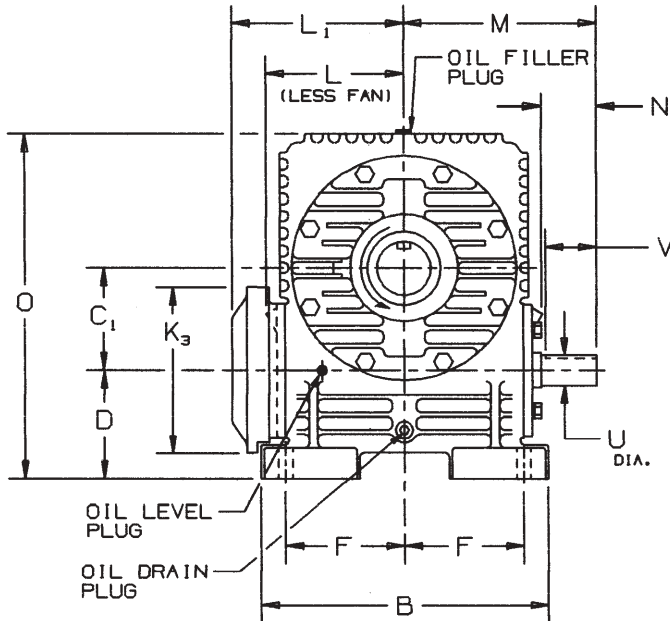
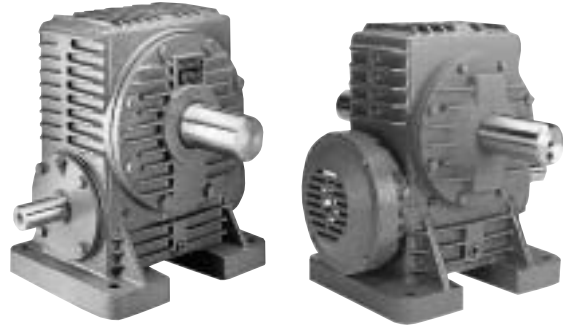
MODEL†	941	951	961	971	981
DB SHIPPING WEIGHT	179	285	440	660	860
FDB SHIPPING WEIGHT	183	290	445	666	868
CDB SHIPPING WEIGHT††	206	320	476	696	898
CFDB SHIPPING WEIGHT††	210	325	481	702	906
APPROX. OIL CAPACITY (QUARTS)	2.1	2.5	3.5	8	10

GEAR RATIO RANGE 5:1 THRU 100:1
DOUBLE REDUCTION VERSION PAGE 60

†Weights are approximate and include shipping container.
††Add 20 pounds if adapter ring is furnished with motor adapter.

MODEL DB

MODEL FDB



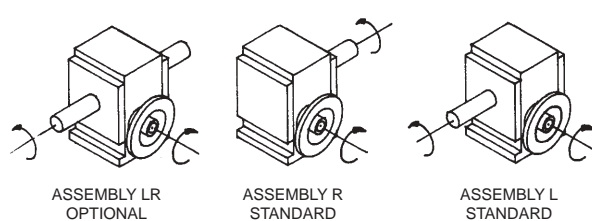
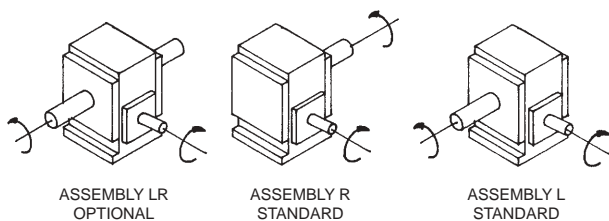
SIZE	A	B	C ₁	D	E	F	G	H	J	K	K ₃ DIA.	L°	L ₁	M	O	P	HIGH SPEED SHAFT			SLOW SPEED SHAFT				
																	U*	N	V	KEYWAY	W*	S	T	KEYWAY
941	10.00	12.76	3.937	5.75	4.13	5.25	1.38	.69	9.69	9.74	7.88	5.78	7.81	9.00	15.69	9.25	1.500	3.22	3.25	3/8 x 3/16	2.250	4.38	4.19	1/2 x 1/4
951	11.25	15.29	4.921	5.75	4.50	6.38	1.50	.81	10.67	10.00	7.88	6.77	8.56	9.73	17.56	9.38	1.500	3.00	3.06	3/8 x 3/16	2.500	4.38	4.13	5/8 x 3/16
961	12.75	16.58	5.906	6.25	5.13	6.88	1.69	.94	12.16	12.00	9.63	8.47	10.69	11.10	19.91	11.50	1.750	3.17	3.12	3/8 x 3/16	3.125	5.50	5.25	3/4 x 3/8
971	15.25	19.40	6.890	7.88	6.25	8.13	2.00	1.06	14.77	13.38	10.75	9.39	12.22	13.25	23.88	13.50	1.750	4.25	4.25	3/8 x 3/16	3.500	6.81	6.56	7/8 x 7/16
981	16.75	22.19	7.874	8.50	6.75	9.25	2.13	1.19	16.37	15.13	11.50	10.45	12.69	15.50	26.50	15.50	2.000	5.60	5.47	1/2 x 1/4	3.875	7.94	7.69	1 x 1/2

*Shaft diameter tolerance +.000, -.001. °Distance to high speed cap on units without a fan. (DB)

SHAFT ARRANGEMENTS AND RELATIVE SHAFT ROTATIONS

DB/FDB Models

CDB/CFDB Models



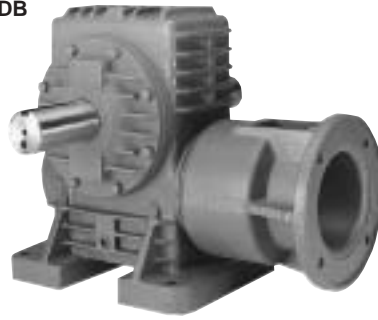
The input shaft may be driven in either direction.



D-90® TYPE DE®

CDB/CFDB

MODEL CDB



MODEL CFDB

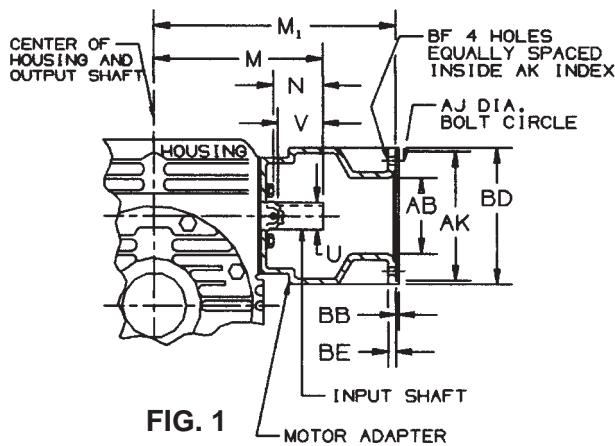


FIG. 1

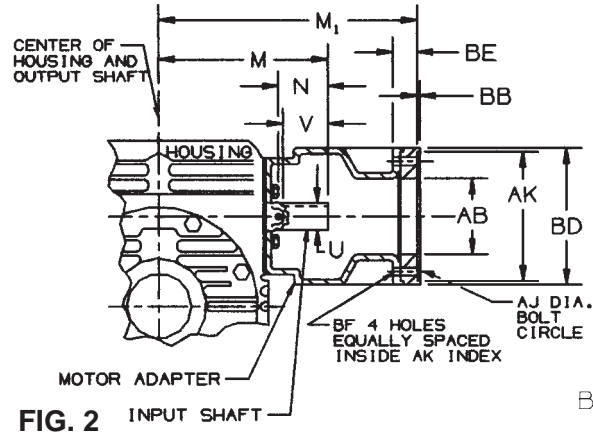


FIG. 2

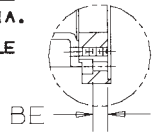


FIG. 3

UNIT SIZE	N.E.M.A. FRAME SIZE	OBSELETE N.E.M.A. FRAME SIZE	AB	AJ	AK	BB	BD	BE	BF	U	N	V	M	M ₁	KEYWAY	CONFIGURATION
941	182TC-184TC	213C-215C	5.00	7.25	8.5005 / 8.5025	.19	9.00	.50	.53	1.500	2.63	3.25	9.00	13.00	3/8 x 3/16	FIGURE 1
	213TC-215TC		5.00	7.25	8.5005 / 8.5025	.19	9.00	.50	.53	1.500	2.63	3.25	9.00	13.00	3/8 x 3/16	FIGURE 1
	254TC-256TC	254UC-256UC	5.00	7.25	8.5005 / 8.5025	.19	9.00	1.44	.53	1.500	2.63	3.25	9.00	13.94	3/8 x 3/16	FIGURE 2*
951	182TC-184TC	213C-215C	5.00	7.25	8.5005 / 8.5025	.19	9.00	.50	.53	1.500	2.93	3.06	9.73	13.75	3/8 x 3/16	FIGURE 1
	213TC-215TC		5.00	7.25	8.5005 / 8.5025	.19	9.00	.50	.53	1.500	2.93	3.06	9.73	13.75	3/8 x 3/16	FIGURE 1
	254TC-256TC	254UC-256UC	5.00	7.25	8.5005 / 8.5025	.19	9.00	1.44	.53	1.500	2.93	3.06	9.73	14.69	3/8 x 3/16	FIGURE 2*
	284TC-286TC	284UC-286UC	5.00	9.00	10.5005 / 10.5025	.19	11.00	.81	.53	1.500	2.93	3.06	9.73	15.44	3/8 x 3/16	FIGURE 3*
961	213TC-215TC		5.00	7.25	8.5005 / 8.5025	.19	9.00	.50	.53	1.750	3.05	3.12	11.10	15.88	3/8 x 3/16	FIGURE 1
	254TC-256TC	254UC-256UC	5.00	7.25	8.5005 / 8.5025	.19	9.00	.50	.53	1.750	3.05	3.12	11.10	15.88	3/8 x 3/16	FIGURE 1
	284TC-286TC	284UC-286UC	5.00	9.00	10.5005 / 10.5025	.19	11.00	.25	.53	1.750	3.05	3.12	11.10	17.00	3/8 x 3/16	FIGURE 3*
971	213TC-215TC		5.00	7.25	8.5005 / 8.5025	.19	9.00	.50	.53	1.750	3.77	3.63	12.63	16.88	3/8 x 3/16	FIGURE 1
	254TC-256TC	254UC-256UC	5.00	7.25	8.5005 / 8.5025	.19	9.00	.50	.53	1.750	3.27	3.13	12.13	16.88	3/8 x 3/16	FIGURE 1
		284UC-286UC	5.00	9.00	10.5005 / 10.5025	.19	11.00	.81	.53	1.750	3.77	3.63	12.63	18.56	3/8 x 3/16	FIGURE 3*
	284TC-286TC		5.00	9.00	10.5005 / 10.5025	.19	11.00	.25	.53	1.750	3.77	3.63	12.63	18.00	3/8 x 3/16	FIGURE 3*
981	213TC-215TC		5.00	7.25	8.5005 / 8.5025	.19	9.00	.50	.53	2.000	3.66	3.47	13.50	17.88	1/2 x 1/4	FIGURE 1
	254TC-256TC	254UC-256UC	5.00	7.25	8.5005 / 8.5025	.19	9.00	.50	.53	2.000	3.29	3.09	13.13	17.88	1/2 x 1/4	FIGURE 1
		284UC-286UC	5.00	9.00	10.5005 / 10.5025	.19	11.00	.50	.53	2.000	3.29	3.09	13.13	19.00	1/2 x 1/4	FIGURE 3*
	284TC-286TC		5.00	9.00	10.5005 / 10.5025	.19	11.00	.50	.53	2.000	3.66	3.47	13.50	19.00	1/2 x 1/4	FIGURE 3*

*Adapter ring furnished with motor adapter.

L-SERIES LOVEJOY COUPLING SELECTION VS. FRAME SIZE (Coupling not provided with unit.)

UNIT SIZE	FRAME						
	182TC-184TC	213C-215C	213TC-215TC	254UC-256UC	254TC-256TC	284UC-286UC	284TC-286TC
941	L-110	L-110	L-110	L-110	L-150	—	—
951	L-110	L-110	L-110	L-110	L-150	L-150	L-190
961	L-150	L-150	L-150	L-150	L-150	L-190	L-190
971	—	L-150	L-150	L-150	L-150	L-190	L-190
981	—	L-190	L-190	L-190	L-190	L-190	L-190

If coupling selection differs from chart, input and/or motor shaft may need alteration.