

GENERAL INFORMATION

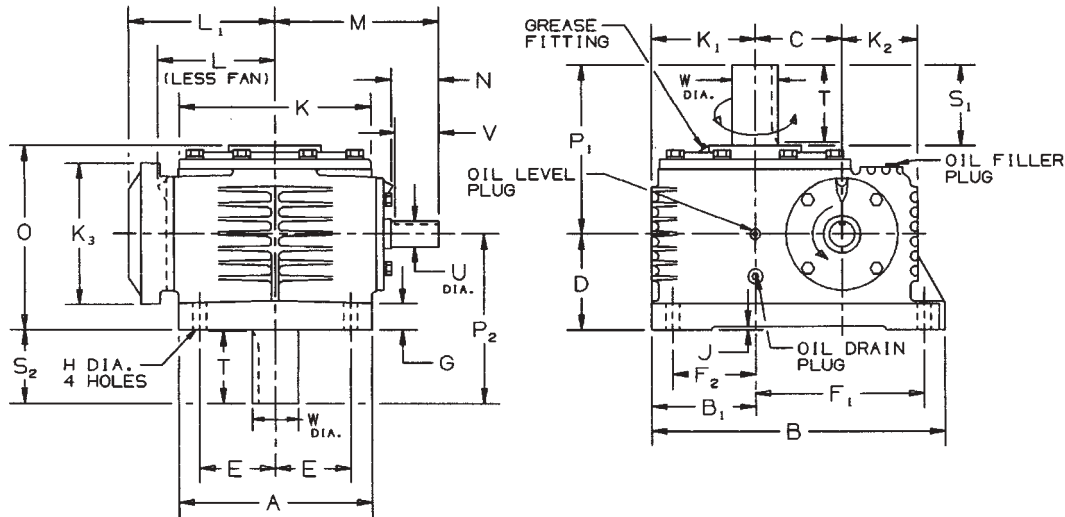
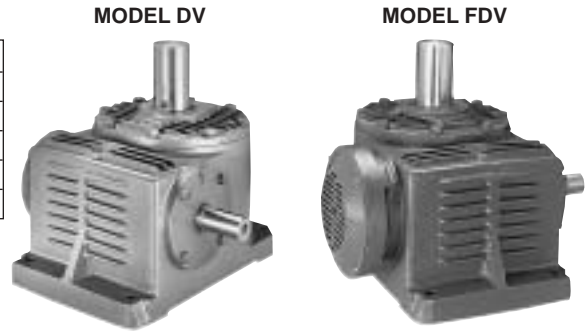
MODEL†	941	951	961	971	981
DV SHIPPING WEIGHT	161	250	500	625	780
FDV SHIPPING WEIGHT	165	255	505	631	788
CDV SHIPPING WEIGHT††	188	285	536	661	826
CFDV SHIPPING WEIGHT††	192	290	541	667	834
APPROX. OIL CAPACITY (QUARTS)	2.5	4.5	8	11	13.5

GEAR RATIO RANGE 5:1 THRU 100:1
DOUBLE REDUCTION VERSION

PAGE 64

†Weights are approximate and include shipping container.

††Add 20 pounds if adapter ring is furnished with motor adapter.



SIZE	A	B	B ₁	C	D	E	F ₁	F ₂	G	H	J	K	K ₁	K ₂	K ₃ DIA.	L°	L ₁	M	O	P ₁	P ₂
941	10.00	15.06	6.06	3.937	5.00	4.25	8.19	4.94	1.38	.69	.25	8.88	4.94	4.81	7.88	5.78	7.81	9.00	9.87	9.25	9.25
951	11.00	17.27	6.58	4.921	5.50	4.38	9.44	5.31	1.50	.81	.25	10.88	6.00	4.88	7.88	6.77	8.56	9.73	10.50	9.38	9.38
961	13.13	19.98	7.06	5.906	6.50	5.13	11.50	5.63	1.69	.94	.25	13.00	7.06	5.18	9.63	8.47	10.69	11.10	12.50	11.50	11.50
971	15.38	23.31	8.45	6.890	7.00	6.31	13.25	6.88	2.00	1.06	.25	15.25	8.31	7.13	10.75	9.39	12.22	13.25	13.69	13.50	13.50
981	17.13	25.54	9.19	7.874	8.00	6.88	14.44	7.31	2.13	1.19	.25	17.00	9.19	7.75	11.50	10.45	12.69	15.50	15.56	15.50	15.50

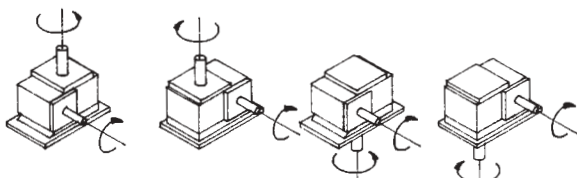
SIZE	HIGH SPEED SHAFT				SLOW SPEED SHAFT				
	U*	N	V	KEYWAY	W*	S ₁	S ₂	T	KEYWAY
941	1.500	3.22	3.25	3/8 x 3/16	2.250	4.38	4.25	4.19	1/2 x 1/4
951	1.500	3.00	3.06	3/8 x 3/16	2.500	4.38	3.88	4.13	3/8 x 3/16
961	1.750	3.17	3.12	3/8 x 3/16	3.125	5.50	5.00	5.25	3/4 x 3/8
971	1.750	4.25	4.25	3/8 x 3/16	3.500	6.81	6.50	6.56	7/8 x 1/2
981	2.000	5.60	5.47	1/2 x 1/4	3.875	7.94	7.50	7.69	1 x 1/2

*Shaft diameter tolerance +.000, -.001.

°Distance to high speed cap on units without a fan. (DV)

SHAFT ARRANGEMENTS AND RELATIVE SHAFT ROTATIONS

DV/FDV Models



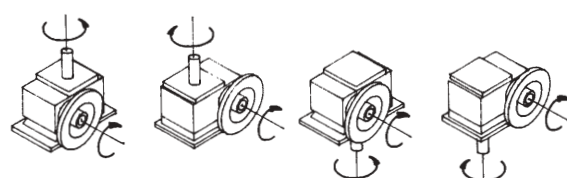
ASSEMBLY RU
STANDARD

ASSEMBLY LU
STANDARD

ASSEMBLY RD
STANDARD

ASSEMBLY LD
STANDARD

CDV/CFDV Models



ASSEMBLY RU
STANDARD

ASSEMBLY LU
STANDARD

ASSEMBLY RD
STANDARD

ASSEMBLY LD
STANDARD

The input shaft may be driven in either direction.



D-90[®] TYPE DE[®]

CDV/CFDV

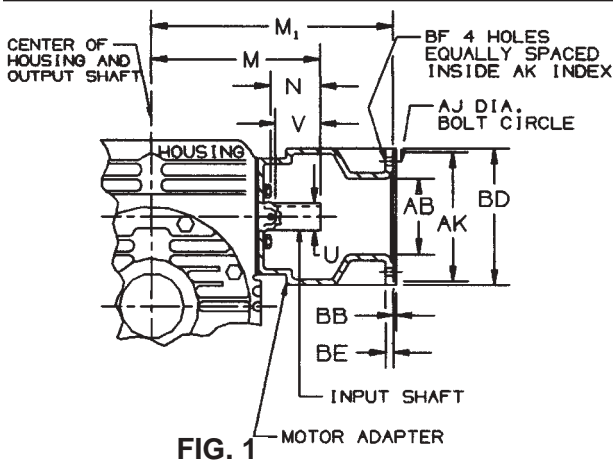
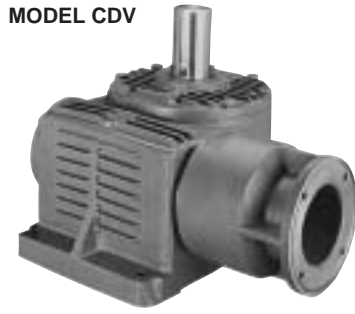


FIG. 1

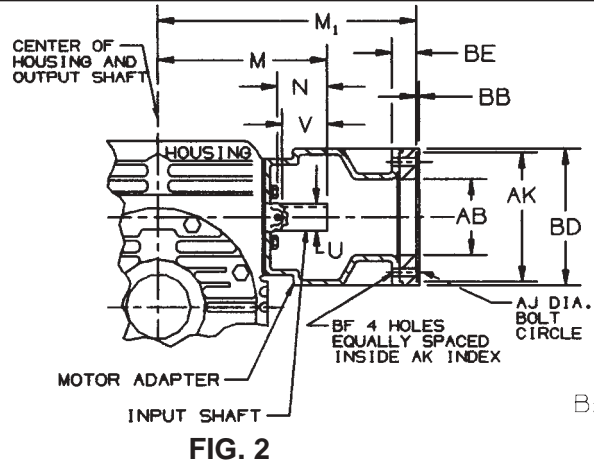


FIG. 2

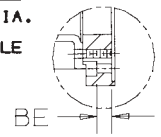


FIG. 3

UNIT SIZE	N.E.M.A. FRAME SIZE	OBSOLETE N.E.M.A. FRAME SIZE	AB	AJ	AK	BB	BD	BE	BF	U	N	V	M	M ₁	KEYWAY	CONFIGURATION
941	182TC-184TC	213C-215C	5.00	7.25	8.5005 / 8.5025	.19	9.00	.50	.53	1.500	2.63	3.25	9.00	13.00	3/8 x 3/16	FIGURE 1
	213TC-215TC		5.00	7.25	8.5005 / 8.5025	.19	9.00	.50	.53	1.500	2.63	3.25	9.00	13.00	3/8 x 3/16	FIGURE 1
	254TC-256TC	254UC-256UC	5.00	7.25	8.5005 / 8.5025	.19	9.00	1.44	.53	1.500	2.63	3.25	9.00	13.94	3/8 x 3/16	FIGURE 2*
951	182TC-184TC	213C-215C	5.00	7.25	8.5005 / 8.5025	.19	9.00	.50	.53	1.500	2.93	3.06	9.73	13.75	3/8 x 3/16	FIGURE 1
	213TC-215TC		5.00	7.25	8.5005 / 8.5025	.19	9.00	.50	.53	1.500	2.93	3.06	9.73	13.75	3/8 x 3/16	FIGURE 1
	254TC-256TC	254UC-256UC	5.00	7.25	8.5005 / 8.5025	.19	9.00	1.44	.53	1.500	2.93	3.06	9.73	14.69	3/8 x 3/16	FIGURE 2*
	284TC-286TC	284UC-286UC	5.00	9.00	10.5005 / 10.5025	.19	11.00	.81	.53	1.500	2.93	3.06	9.73	15.44	3/8 x 3/16	FIGURE 3*
961	213TC-215TC		5.00	7.25	8.5005 / 8.5025	.19	9.00	.50	.53	1.750	3.05	3.12	11.10	15.88	3/8 x 3/16	FIGURE 1
	254TC-256TC	254UC-256UC	5.00	7.25	8.5005 / 8.5025	.19	9.00	.50	.53	1.750	3.05	3.12	11.10	15.88	3/8 x 3/16	FIGURE 1
	284TC-286TC	284UC-286UC	5.00	9.00	10.5005 / 10.5025	.19	11.00	.25	.53	1.750	3.05	3.12	11.10	17.00	3/8 x 3/16	FIGURE 3*
971	213TC-215TC		5.00	7.25	8.5005 / 8.5025	.19	9.00	.50	.53	1.750	3.77	3.63	12.63	16.88	3/8 x 3/16	FIGURE 1
	254TC-256TC	254UC-256UC	5.00	7.25	8.5005 / 8.5025	.19	9.00	.50	.53	1.750	3.27	3.13	12.13	16.88	3/8 x 3/16	FIGURE 1
		284UC-286UC	5.00	9.00	10.5005 / 10.5025	.19	11.00	.81	.53	1.750	3.77	3.63	12.63	18.56	3/8 x 3/16	FIGURE 3*
	284TC-286TC		5.00	9.00	10.5005 / 10.5025	.19	11.00	.25	.53	1.750	3.77	3.63	12.63	18.00	3/8 x 3/16	FIGURE 3*
981	213TC-215TC		5.00	7.25	8.5005 / 8.5025	.19	9.00	.50	.53	2.000	3.66	3.47	13.50	17.88	1/2 x 1/4	FIGURE 1
	254TC-256TC	254UC-256UC	5.00	7.25	8.5005 / 8.5025	.19	9.00	.50	.53	2.000	3.29	3.09	13.13	17.88	1/2 x 1/4	FIGURE 1
		284UC-286UC	5.00	9.00	10.5005 / 10.5025	.19	11.00	.50	.53	2.000	3.29	3.09	13.13	19.00	1/2 x 1/4	FIGURE 3*
	284TC-286TC		5.00	9.00	10.5005 / 10.5025	.19	11.00	.50	.53	2.000	3.66	3.47	13.50	19.00	1/2 x 1/4	FIGURE 3*

*Adapter ring furnished with motor adapter.

UNIT SIZE	L-SERIES LOVEJOY COUPLING SELECTION VS. FRAME SIZE (Coupling not provided with unit.)						
	FRAME						
	182TC-184TC	213C-215C	213TC-215TC	254UC-256UC	254TC-256TC	284UC-286UC	284TC-286TC
941	L-110	L-110	L-110	L-110	L-150	—	—
951	L-110	L-110	L-110	L-110	L-150	L-150	L-190
961	L-150	L-150	L-150	L-150	L-150	L-190	L-190
971	—	L-150	L-150	L-150	L-150	L-190	L-190
981	—	L-190	L-190	L-190	L-190	L-190	L-190

If coupling selection differs from chart, input and/or motor shaft may need alteration.