

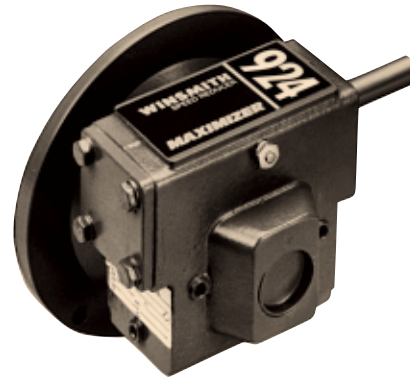
DD

DOUBLE DRIVER WITH SMALL OUTPUT FLANGE (4.5 inch diameter register)



MODEL†	913	917	920	924	926
DD SHIPPING WEIGHT	15	18	22	37	39
MDD SHIPPING WEIGHT‡	17	21	25	41	43
CDD SHIPPING WEIGHT‡	20	25	29	46	48
APPROX. OIL CAPACITY (PINTS)	.2	.5	.5	1.0	1.2

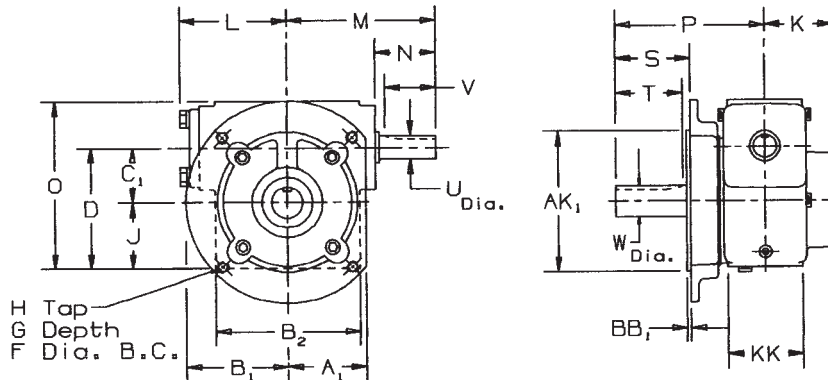
MODEL DD
Assembly R



GEAR RATIOS AVAILABLE 4:1 THRU 100:1**
 TORQUE AND HP RATINGS/OVERHUNG LOAD RATINGS PAGES 20-117
 MOUNTING POSITIONS PAGE 187
 SERVICE FACTORS PAGES 228-230
 HYDRAULIC MOTOR ADAPTERS PAGE 174

†Weights are approximate and include shipping carton.
 ‡Weight given for 48C thru 145TC. For 182/4TC add 4 lbs.
 **80:1 & 100:1 not available for size 913.

DIMENSIONS



SPEED REDUCER DIMENSIONS (IN INCHES)

SIZE	A ₁	AK ₁	B ₁	B ₂	BB ₁	C ₁	D	F DIA.	G DEPTH	H TAP	J	K	KK	L	M	O	P	HIGH SPEED SHAFT				SLOW SPEED SHAFT			
																		U*	N	V	KEYWAY	W*	S	T	KEYWAY
913	2.38	4.50	3.25	3.88	.13	1.333	3.08	5.88	.75	3/8-16	1.75	1.94	2.00	2.83	4.12	4.33	4.00	.625	1.81	1.63	.19 x .09	.750	1.50	1.88	.19 x .09
917	2.50	4.50	3.25	4.63	.13	1.750	3.88	5.88	.88	3/8-16	2.13	2.19	2.38	3.44	4.75	5.38	4.75	.750	1.94	1.69	.19 x .09	1.000	2.38	2.31	.25 x .13
920	2.50	4.50	3.25	5.25	.13	2.000	4.13	5.88	.88	3/8-16	2.13	2.19	2.38	3.44	5.00	5.63	4.75	.750	2.19	1.75	.19 x .09	1.000	2.38	2.31	.25 x .13
924†	3.25	4.50	3.25	5.38	.13	2.375	5.25	5.88	.75	3/8-16	2.88	2.69	3.13	4.50	6.50	7.25	5.50	1.000	2.75	2.38	.25 x .13	1.250	2.13	2.63	.25 x .13
926†	3.25	4.50	3.25	5.88	.13	2.625	5.75	5.88	.75	3/8-16	3.13	2.69	3.13	4.50	6.50	7.88	5.50	1.000	2.75	2.38	.25 x .13	1.250	2.13	2.63	.25 x .13

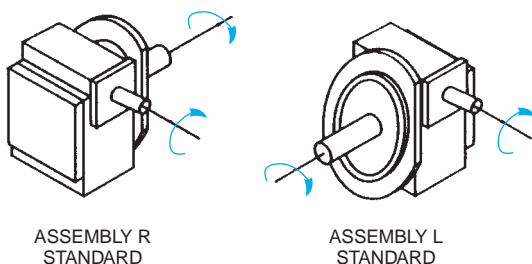
† This size is available in both small and large output flange. Specify flange size when ordering.
 * Shaft diameter tolerances +.000 -.001. For construction purposes send for Certified Dimension Sheets.

OPTIONAL OUTPUT SHAFTS FOR MATCHING NEMA FRAME SIZES

SIZE	P	W*	S	T	KEYWAY
913	4.56	.625	2.06	1.81	.19 x .09
917	4.44	.625•	2.06	1.81	.19 x .09
917	4.50	.875	2.13	2.00	.19 x .09
920	4.50	.875	2.13	2.00	.19 x .09
924	5.50	.875••	2.13	2.25	.19 x .09

•Catalog output torque limited to 520 in. lb.
 ••Catalog output torque limited to 1420 in. lb.

SHAFT ARRANGEMENTS AND RELATIVE SHAFT ROTATIONS



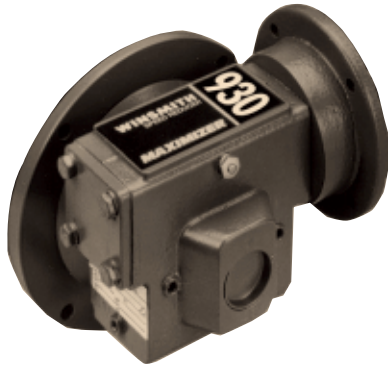
The input shaft may be driven in either direction.



D-90[®] TYPE SE[®]

MDD-CDD

MODEL MDD
Assembly R

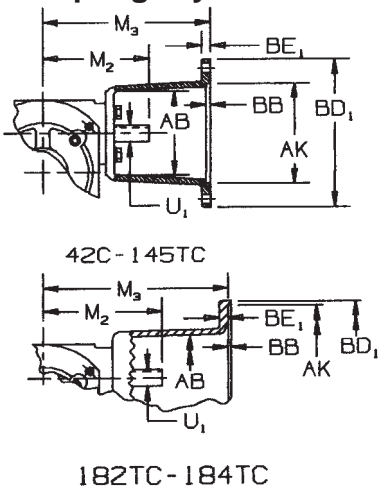


MODEL CDD
Assembly R

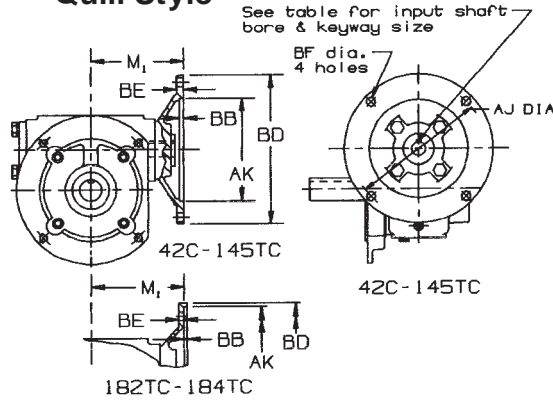


DIMENSIONS

Coupling Style



Quill Style



DOUBLE DRIVER FRAME SIZES

DOUBLE DRIVER SIZE	MOTOR FRAME	OUTPUT FRAME
913	42C*/48C	56C
913	56C	56C
913	143/145TC	56C
917	42C*/48C	56C
917	56C	56C
917	143/145TC	56C
917	42C*/48C	143/145TC
917	56C	143/145TC
917	143/145TC	143/145TC
920	42C*/48C	143/145TC
920	56C	143/145TC
920	143/145TC	143/145TC
924	56C	143/145TC
924	143/145TC	143/145TC
924	182/184TC	143/145TC

*3/8" motor shaft diameter—3/32" x 3/64" keyway.

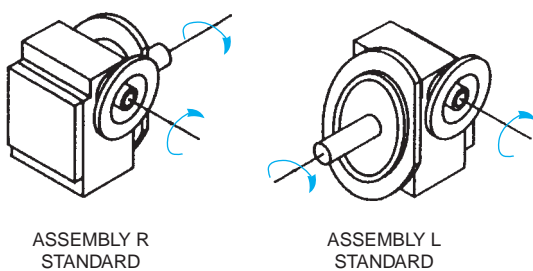
SIZE	QUILL STYLE HOLLOW INPUT MOTOR ADAPTER			COUPLING STYLE MOTOR ADAPTER											
	M1 42C 48C	M1 56C 145TC	M1 182TC 184TC	42C-48C			56C-145TC			182TC-184TC			M2*	U1*	KEYWAY
	AB	M2	BE1	AB	M2	BE1	AB	M2	BE1						
913	3.56	3.63 Δ	NA	2.50	6.81	.38	3.00	6.75	.31	NA	NA	NA	4.12	.500	.13 x .06
917	4.06	4.06	NA	2.50	7.56	.38	3.75	7.50	.38	3.75	8.44	.50	4.88	.625	.19 x .09
920	4.06	4.06	NA	2.50	7.56	.38	3.75	7.50	.38	3.75	8.44	.50	4.88	.625	.19 x .09
924 \dagger	NA	5.38	5.38	NA			4.13	9.13	.38	4.25	10.19	.50	6.50	1.000	.25 x .13
926 \dagger	NA	5.38	5.38	NA			4.13	9.13	.38	4.25	10.19	.50	6.50	1.000	.25 x .13

FRAME NO.	42C-48C	56C	143TC 145TC	182TC 184TC
AJ	3.75	5.88	5.88	7.25
AK	3.00	4.50	4.50	8.50
BB	.19	.19	.19	.19
BD	4.50	6.50	6.50	9.00
BD1	4.50	6.63	6.63	9.00
BE	.34	.31	.31	.38
BF	.281	.406	.406	.531
KEYWAY	.13 x .06	.19 x .09		.25 x .13
Bore	$^{+.001}_{-.000}$.5000 \square	.6255	.8755

\square 42C frame has .375 bore, .094 x .047 keyway.

* Input shaft diameter and length varies from non-motorized model on sizes 913 thru 920.
 Δ 56C frame only.
 \dagger This size is available in both small and large output flange.
 Specify flange size when ordering.

SHAFT ARRANGEMENTS AND RELATIVE SHAFT ROTATIONS



The input shaft may be driven in either direction.