

MODEL†	926	930	935	943
DL SHIPPING WEIGHT	50	90	121	174
MDL SHIPPING WEIGHT‡	54	94	125	179
CDL SHIPPING WEIGHT‡	59	100	131	184
APPROX. OIL CAPACITY (PINTS)	3.2	5.0	6.1	9.6

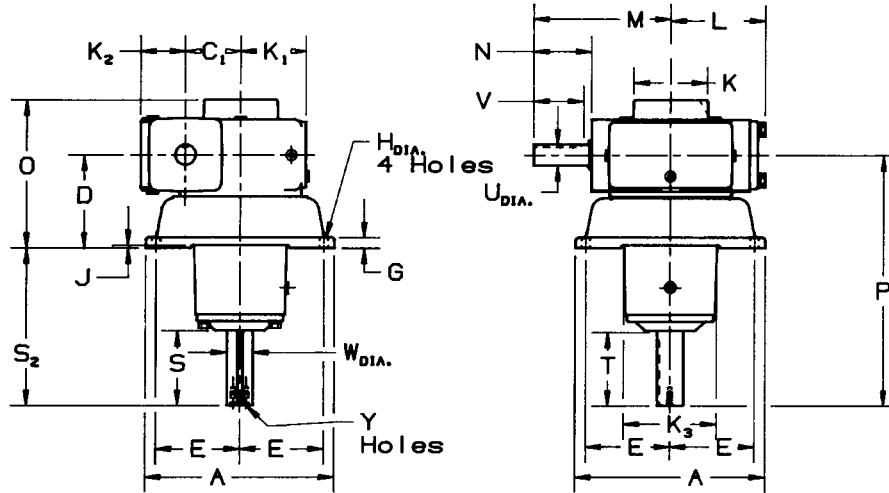
MODEL DL
Assembly LD



GEAR RATIOS AVAILABLE 4:1 THRU 100:1
 TORQUE AND HP RATINGS/OVERHUNG LOAD RATINGS PAGES 20-117
 MOUNTING POSITIONS PAGE 187
 SERVICE FACTORS PAGES 228-230
 HYDRAULIC MOTOR ADAPTERS PAGE 174

†Weights are approximate and include shipping carton.
 ‡Weight given for 48C thru 145TC. For 182/4TC and 213/5TC add 4 lbs.

DIMENSIONS



SPEED REDUCER DIMENSIONS (IN INCHES)

SIZE	A	C ₁	D	E	G	H	J	K	K ₁	K ₂	K ₃	L	M	O	P	Y DIMENSIONS			HIGH SPEED SHAFT			SLOW SPEED SHAFT				SIZE		
																TAP	DEPTH	BOLT CIRCLE	U*	N	V	KEYWAY	W*	S	S ₂		T	KEYWAY
926	9.00	2.625	4.44	4.00	.50	.406	.13	3.50	3.13	2.13	4.44	4.50	6.50	7.06	11.94	.25-20	.44	.625	1.000	2.75	2.38	.25 x .13	1.250	3.68	7.50	3.50	.25 x .13	926
930	9.75	3.000	5.31	4.13	.63	.563	.13	3.50	3.50	2.50	5.19	4.63	7.00	8.31	14.81	.31-18	.50	.750	1.000	3.06	2.38	.25 x .13	1.438	4.63	9.50	4.56	.38 x .19	930
935	12.00	3.500	5.38	5.25	.75	.563	.13	4.13	4.00	2.63	5.38	5.06†	7.38	8.63	14.88	.31-18	.50	.750	1.000	2.31	2.50	.25 x .13	1.625	4.75	9.50	4.56	.38 x .19	935
943	14.00	4.250	6.00	6.00	.88	.688	.13	4.75	4.38	2.88	5.94	5.88‡	8.19	9.63	16.50	.38-16	1.00	1.000	1.250	2.31	2.50	.25 x .13	1.688	5.61	10.50	5.44	.38 x .19	943

*Shaft diameter tolerance +.000 -.001. For construction purposes send for Certified Dimension Sheets.

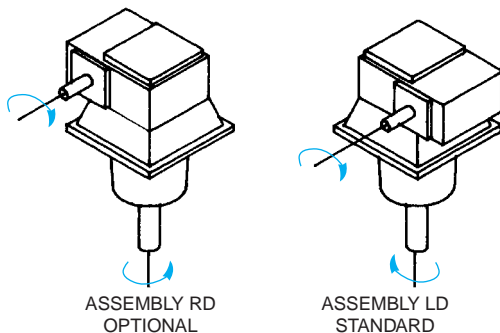
†L dimension equals 5.46 on MDL models.

‡L dimension equals 6.28 on MDL models.

For larger sizes see C-Line Catalog 100 or D-90[®] TYPE DE[®] Catalog 190.

CAUTION: S EQUALIZER[®] option not available with DL Unit.

SHAFT ARRANGEMENTS AND RELATIVE SHAFT ROTATIONS



AutoCAD[®] drawing for these models available in WINSMITH[®]'s Gear Graphics.

The input shaft may be driven in either direction.



D-90[®] TYPE SE[®]

MDL-CDL

MODEL MDL
Assembly LD

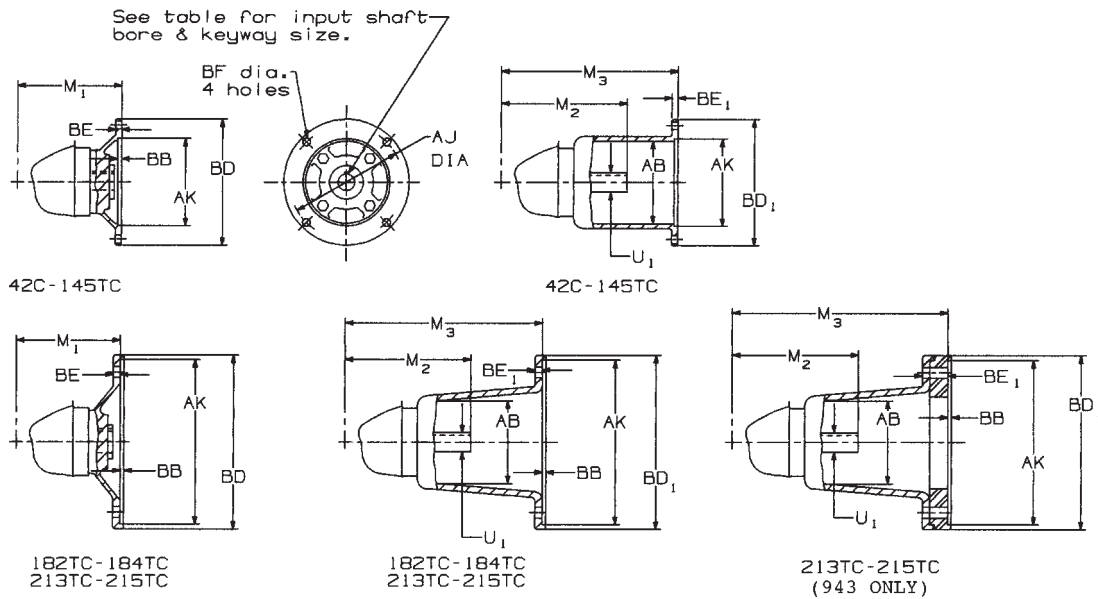


MODEL CDL
Assembly LD



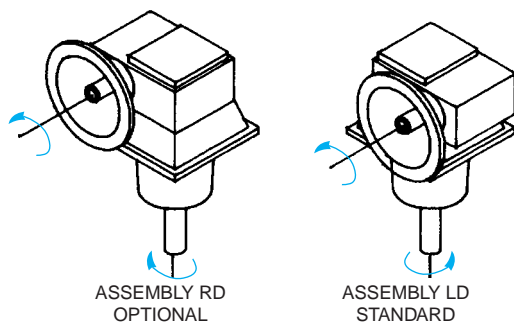
Couplings available, see page 184 for Selection Chart.

DIMENSIONS



SIZE	FRAME SIZE RANGE	HOLLOW INPUT MOTOR ADAPTER			COUPLING STYLE MOTOR ADAPTER											
		M ₁ 56C-145TC	M ₁ 182TC 184TC	M ₁ 213TC 215TC	56C-145TC			182TC-184TC			213TC-215TC			M ₂	U ₁	KEYWAY
		AB	M ₃	BE ₁	AB	M ₃	BE ₁	AB	M ₃	BE ₁						
926	56C-184TC	5.38	5.38	NA	4.13	9.13	.38	4.25	10.19	.50	NA			6.50	1.000	.25 x .13
930	56C-184TC	5.56	5.56	NA	4.13	9.75	.38	4.75	10.88	.50	4.75	10.88	.50	7.00	1.000	.25 x .13
935	56C-184TC	5.81	5.81	NA	4.13	10.00	.38	4.75	11.13	.50	4.75	11.13	.50	7.38	1.000	.25 x .13
943	56C-215TC	6.63	6.63	6.63	4.13	10.81	.38	4.75	11.94	.50	4.75	12.88	1.44	8.19	1.250	.25 x .13

SHAFT ARRANGEMENTS AND RELATIVE SHAFT ROTATIONS



AutoCAD[®] drawing for these models available in WINSMITH's Gear Graphics.

FRAME NO.	56C	143TC 145TC	182TC 184TC	213TC 215TC
AJ	5.88	5.88	7.25	7.25
AK	4.50	4.50	8.50	8.50
BB	.19	.19	.19	.19
BD	6.50	6.50	9.00	9.00
BD ₁	6.63	6.63	9.00	9.00
BE	.31	.31	.38	.38
BF	.406	.406	.531	.531
KEYWAY	.19 x .09		.25 x .13	
BORE	+.001 -.000	.6255	.8755	1.1255
			1.3755	

The input shaft may be driven in either direction.