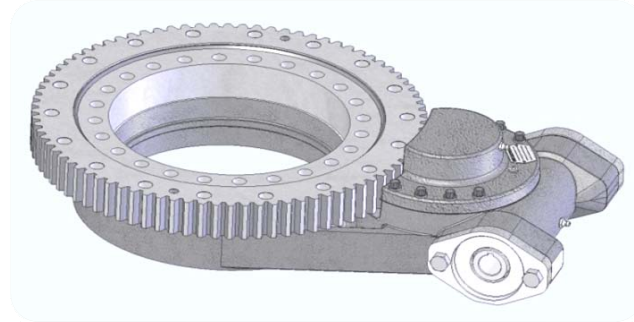


SW OPEN SLEWING DRIVE



Ratings are for preliminary selection - actual duty cycle and loads should be reviewed by Winsmith before final selection

Product Model (1)	Bearing Pitch Diameter	Ratio (2) (3)	Normal Operating Torque	Max Operating Torque	Max Static Torque	Max Overturning Moment	Static Axial Load Capacity	Static Radial Load capacity	Maximum Backlash
			in lbs	in lbs	in lbs	in lbs	lbs	lbs	arc min
SW1200	8.76"	138.46:1	16,200	32,400	73,000	228,000	113,500	56,750	12
SW1500	11.26"	170.77:1	20,700	41,400	74,000	372,000	143,000	71,500	10
SW1700	13.48"	192.66:	37,000	74,000	149,000	584,000	189,000	94,500	9
SW2000	16.63"	228.93:1	45,500	90,000	175,000	1,133,000	300,700	150,350	7

- (1) Standard input style is hydraulic. Electric motor input available in multiple reduction units
- (2) Ratios up to 40,000:1 available with additional input reduction stages
- (3) Unit will not backdrive under most conditions

DISCLAIMER. This information is intended to provide general guidance to assist in making the proper product selection for an application.

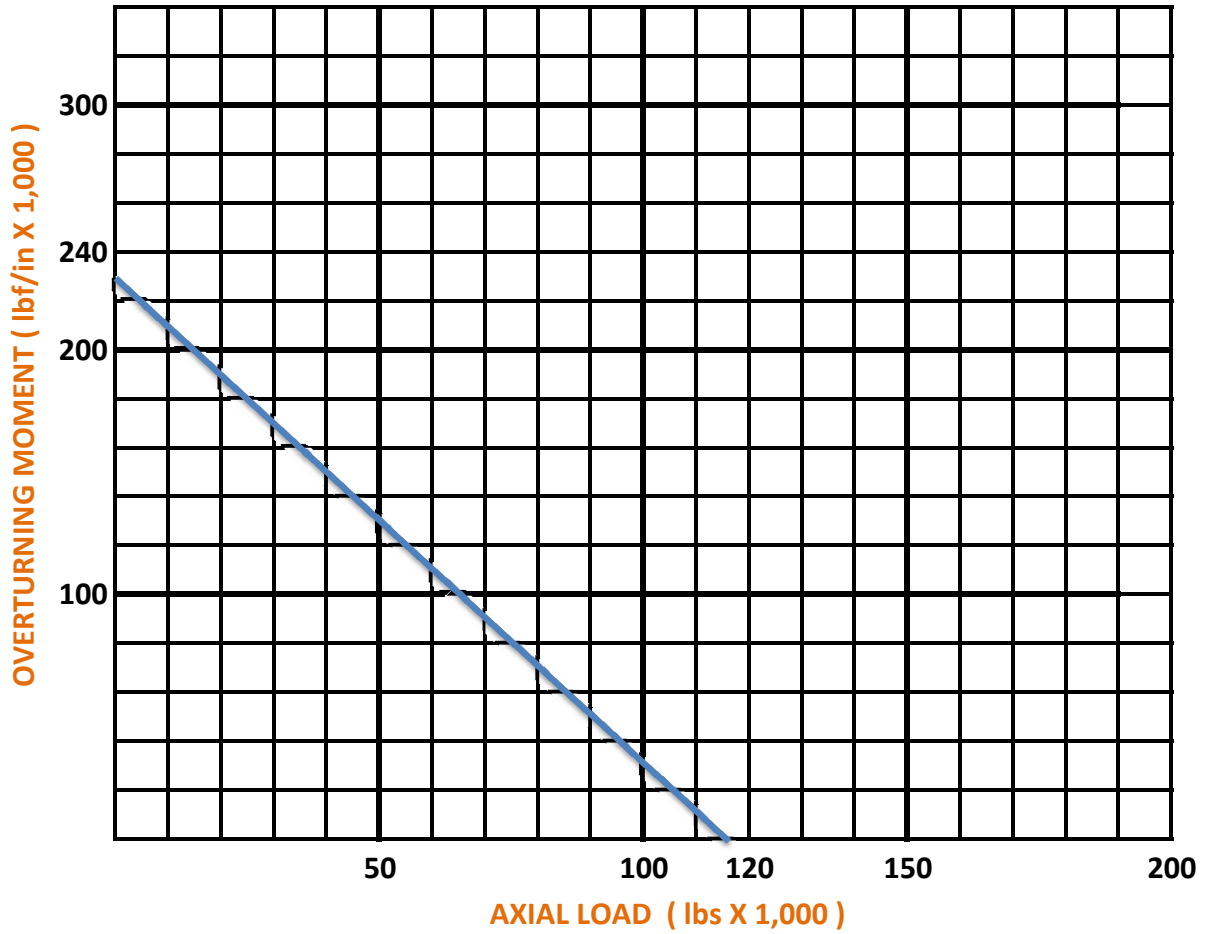
While this information is believed to be accurate, it is based on assumptions, calculations, information provided by others and, in some cases, not limited and specific laboratory tests, and on actual field conditions or applications. As such, it does not represent a guarantee with respect to characteristics or performance of the product in any given application or use. Winsmith products are intended for selection and use by trained and skilled persons capable of determining their suitability for the specific application or use. The purchaser or user is obligated to determine the suitability of products for the application or use. This information is subject to correction or change by Winsmith without notice. Please consult the Winsmith website for most recent updates



172 EATON STREET • SPRINGVILLE, NY 14141
 Phone: (716) 592-9310 • Fax: (716) 592-9546 • www.WINSMITH.com

STATIC LIMITING LOAD GRAPH

SW1200

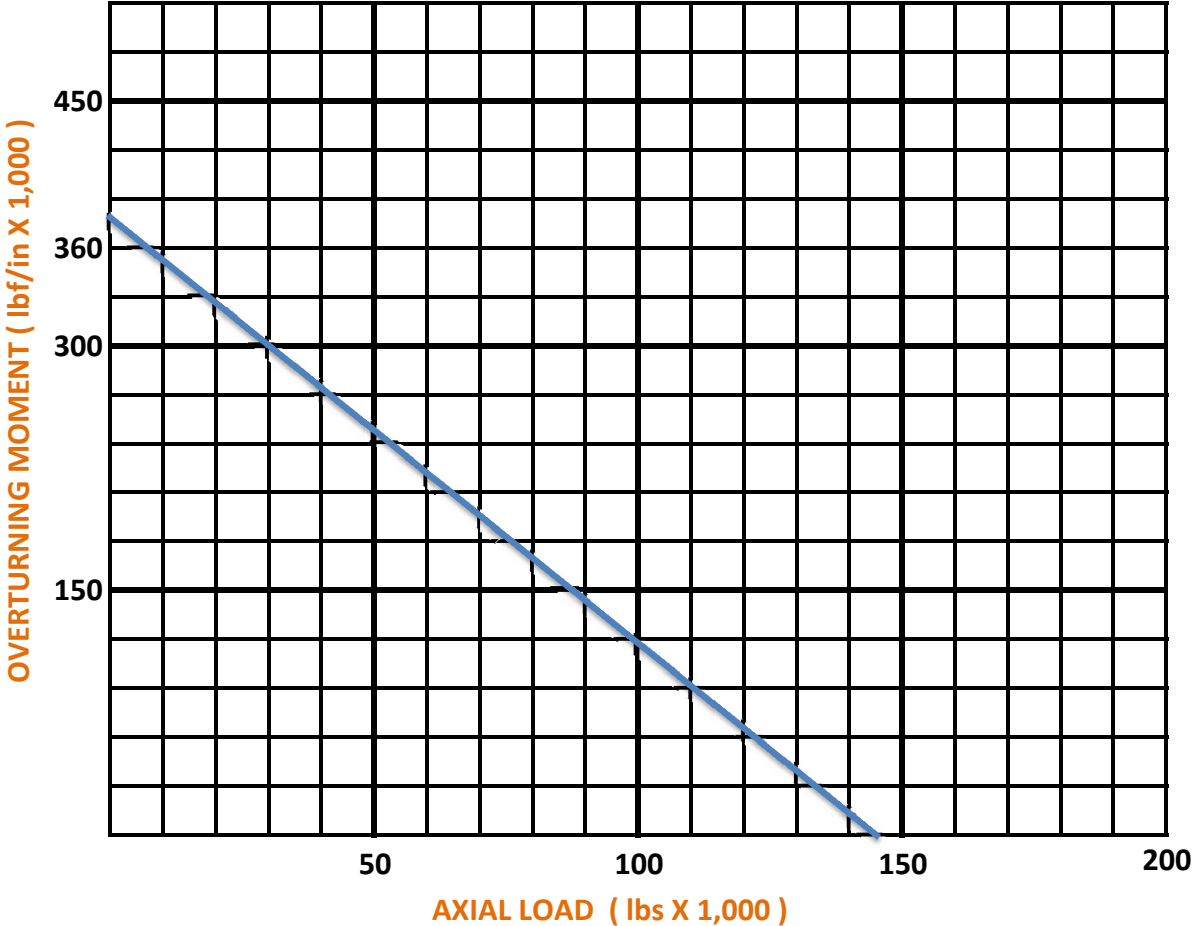


MOUNTING DIMENSIONS

OUTSIDE BOLT CIRCLE	10.63" (335)
INSIDE BOLT CIRCLE	6.89"(175)

STATIC LIMITING LOAD GRAPH

SW1500

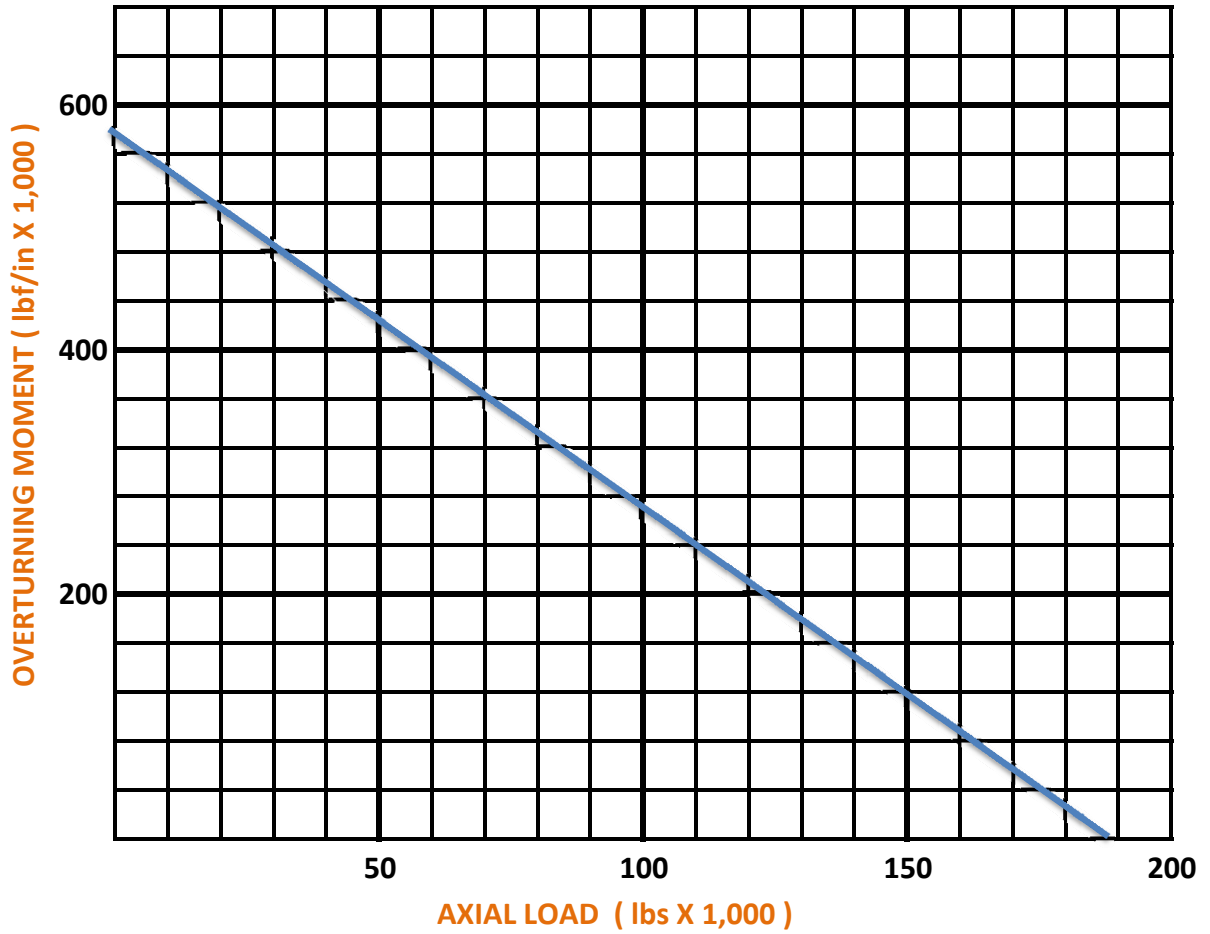


MOUNTING DIMENSIONS

OUTSIDE BOLT CIRCLE 13.19" (335)
INSIDE BOLT CIRCLE 9.45" (240)

STATIC LIMITING LOAD GRAPH

SW1700

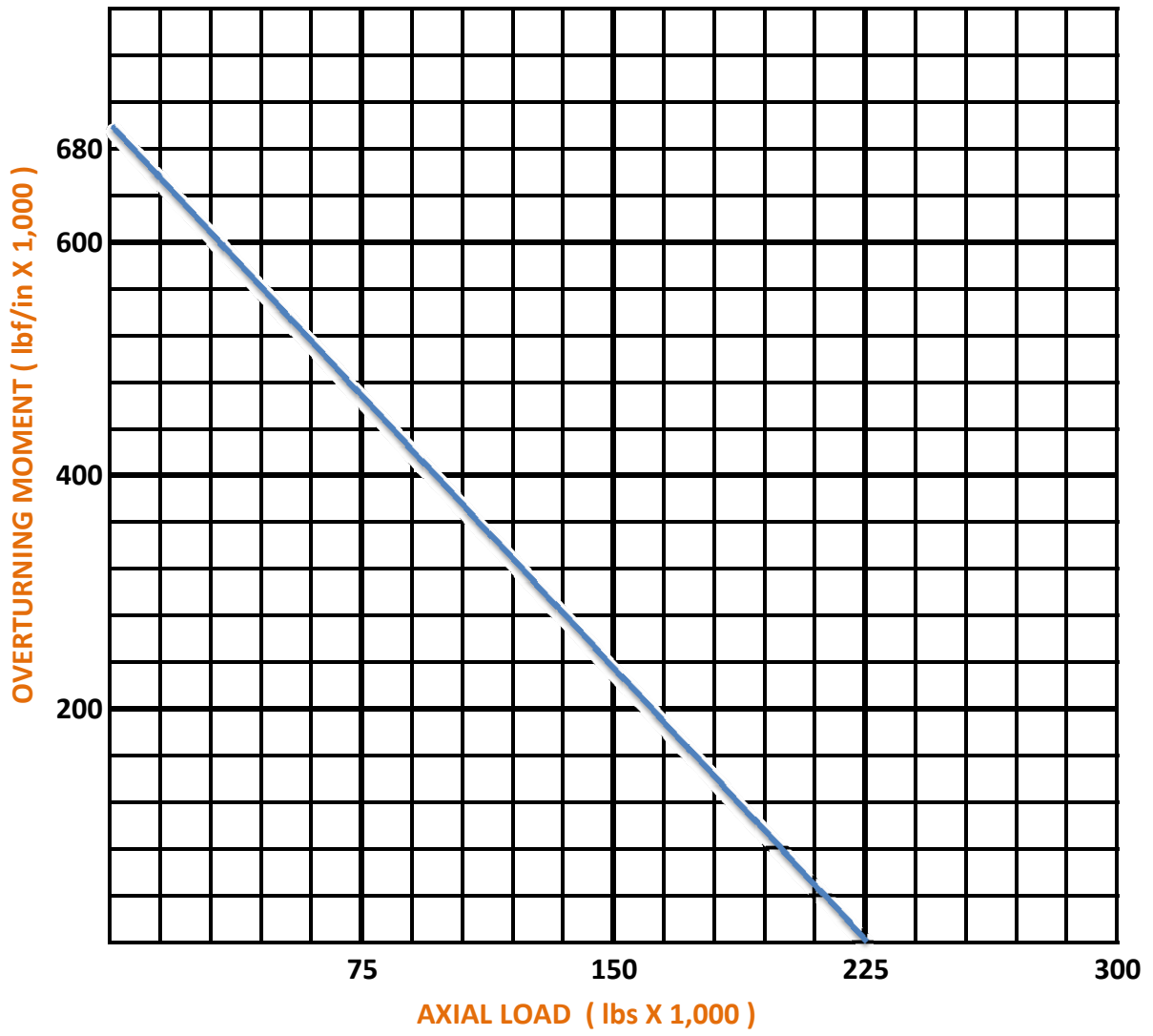


MOUNTING DIMENSIONS

OUTSIDE BOLT CIRCLE	15.35" (390)
INSIDE BOLT CIRCLE	11.61" (295)

STATIC LIMITING LOAD GRAPH

SW2000



MOUNTING DIMENSIONS

OUTSIDE BOLT CIRCLE	18.87" (479.4)
INSIDE BOLT CIRCLE	14.37" (365.1)